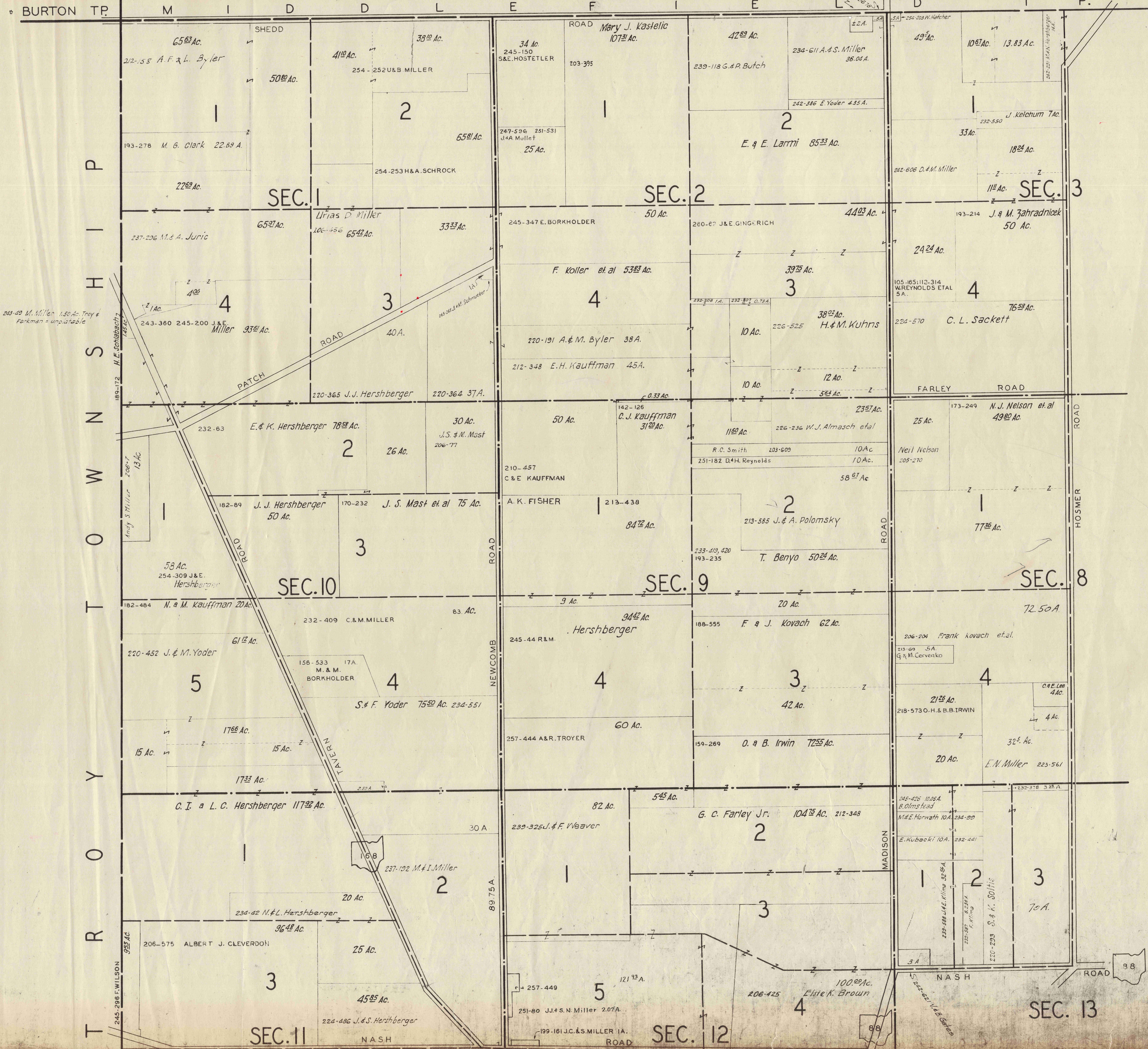


NORTH-WEST QUARTER

PARKMAN T.P.

NORTH-WEST QUARTER



243-49 M. Miller 1.50 Ac. Troy & Parkman - unplatable

SCALE 1" = 10 CH.

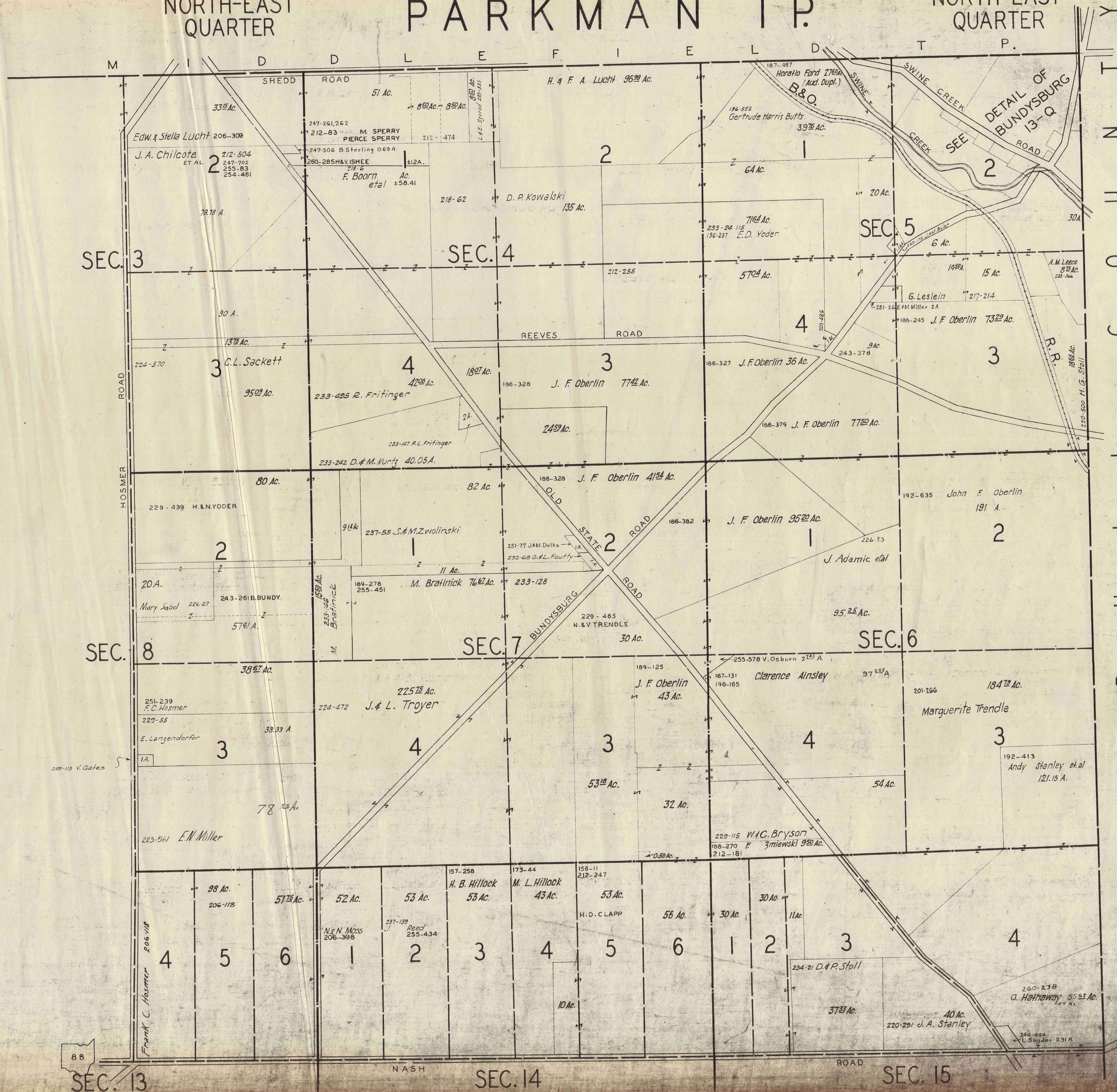
JAN. 1, 1955

13 N.W.

NORTH-EAST QUARTER

PARKMAN T.P.

NORTH-EAST QUARTER



SCALE 1 IN. = 10 CH.

JAN. 1, 1955

SEC. 13

SEC. 14

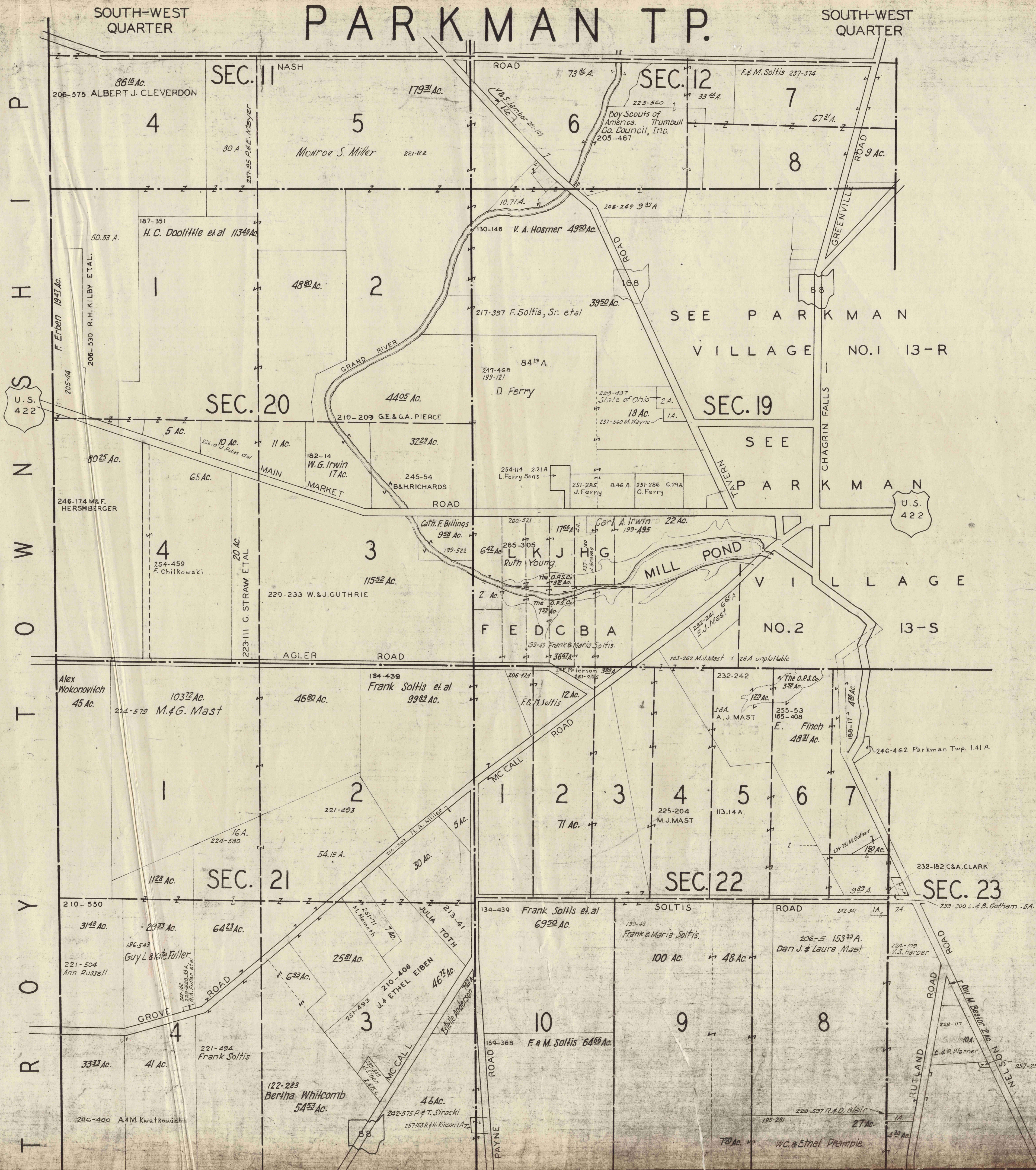
SEC. 15

13 NE

88

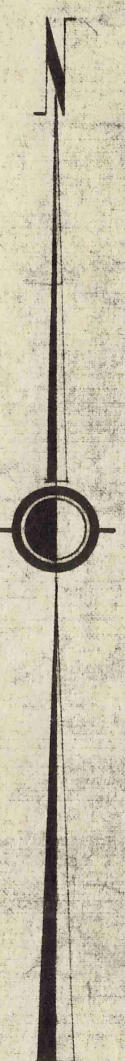
88

PARKMAN TWP.



U.S. 422

U.S. 422



SCALE 1 IN. = 10 CH.

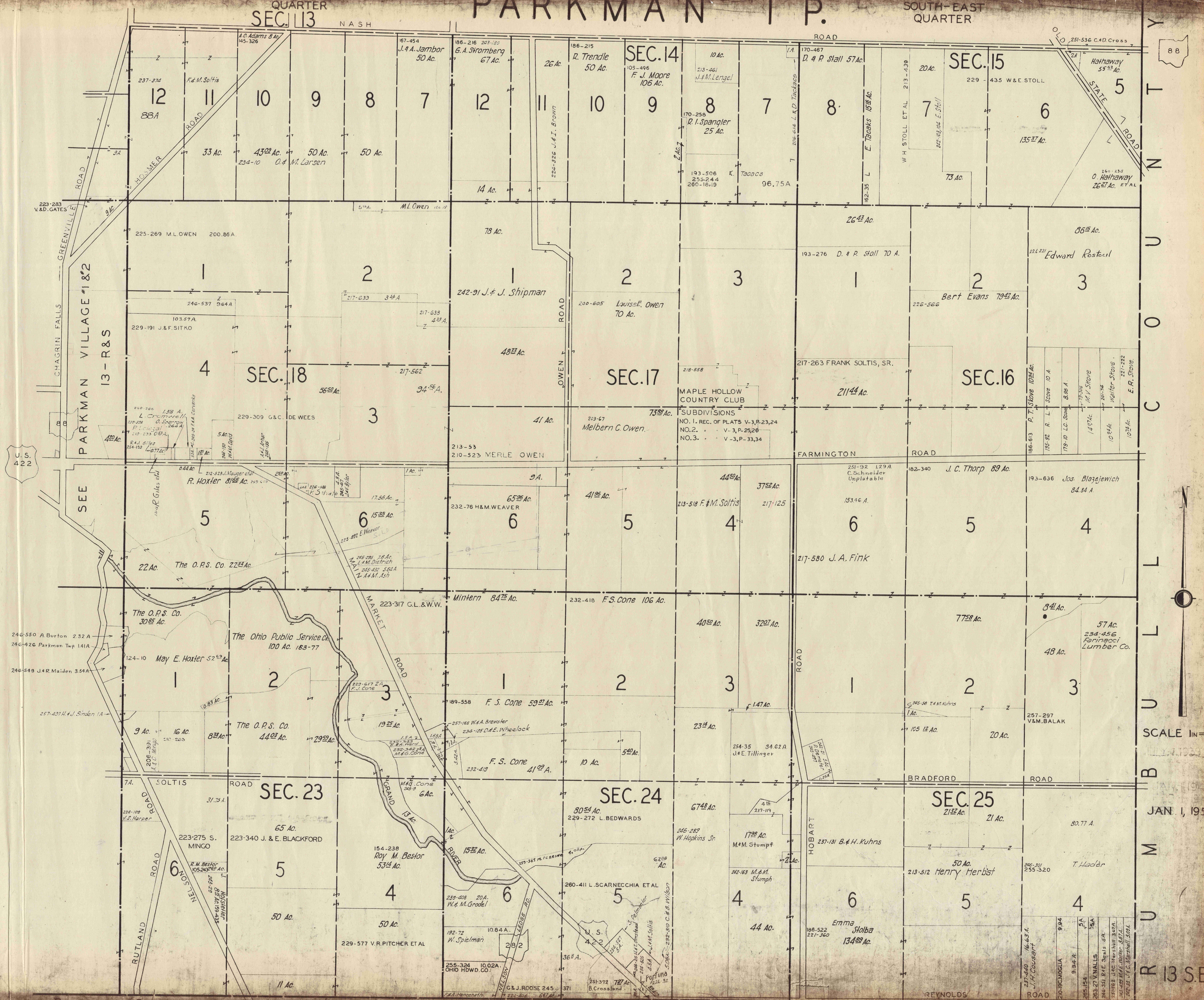
JAN. 1, 1955

13-SW

SEC. 13

PARKMAN T.P.

SOUTH-EAST QUARTER



88

SCALE 1 IN = 100

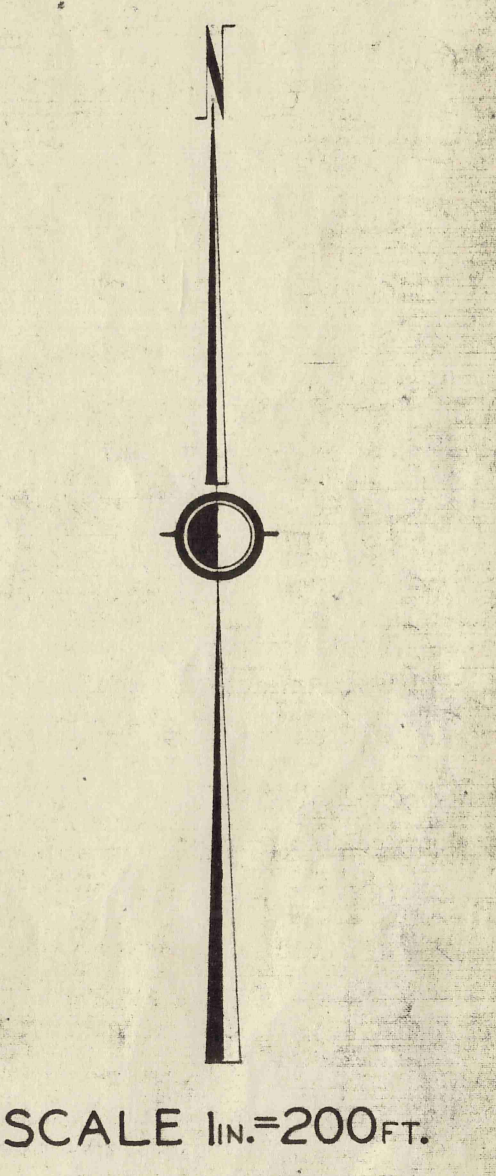
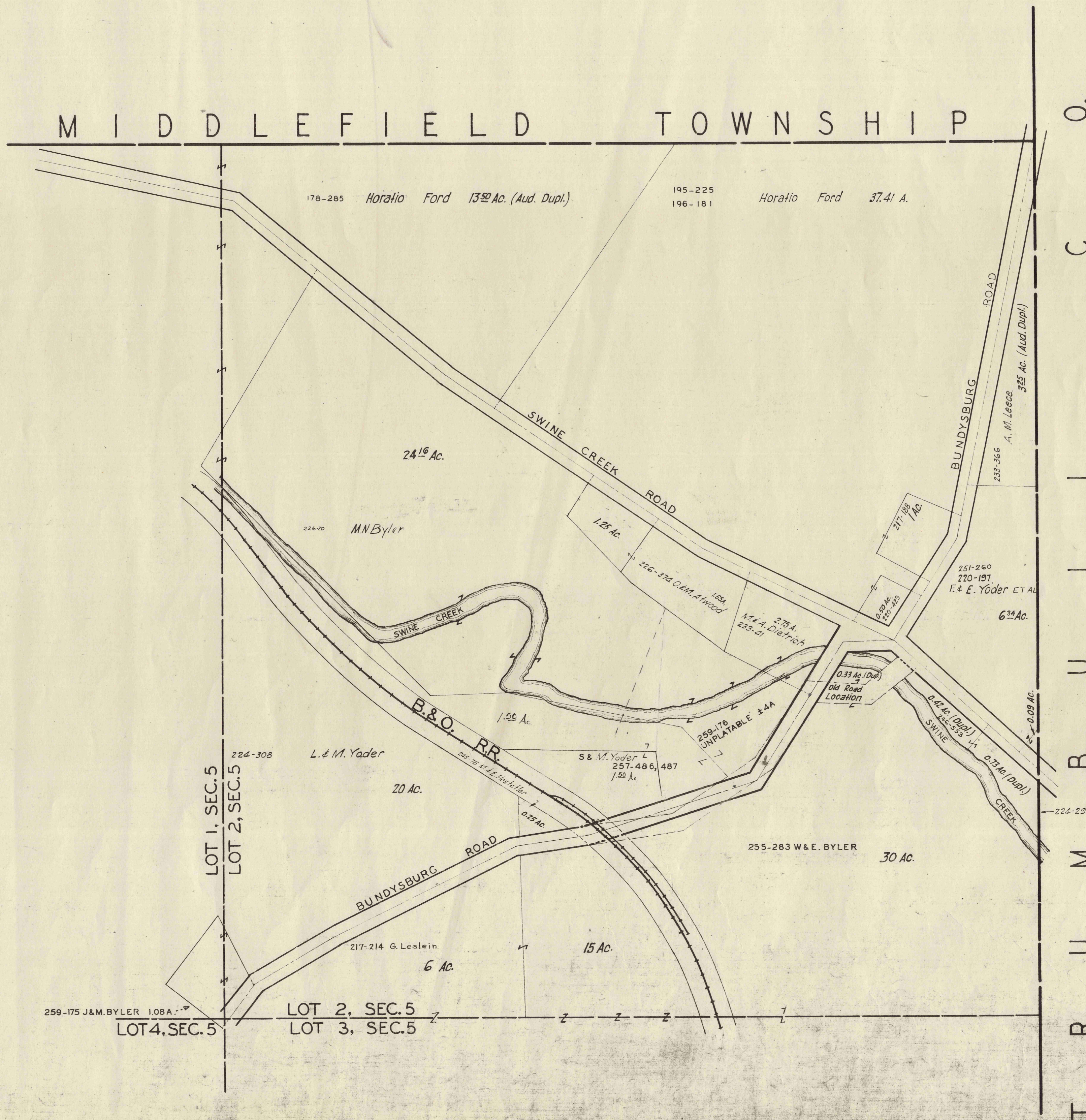
JAN. 1, 1955

R 13 SE

LOT 2, SECTION 5
BUNDYSBURG

PARKMAN T.P.

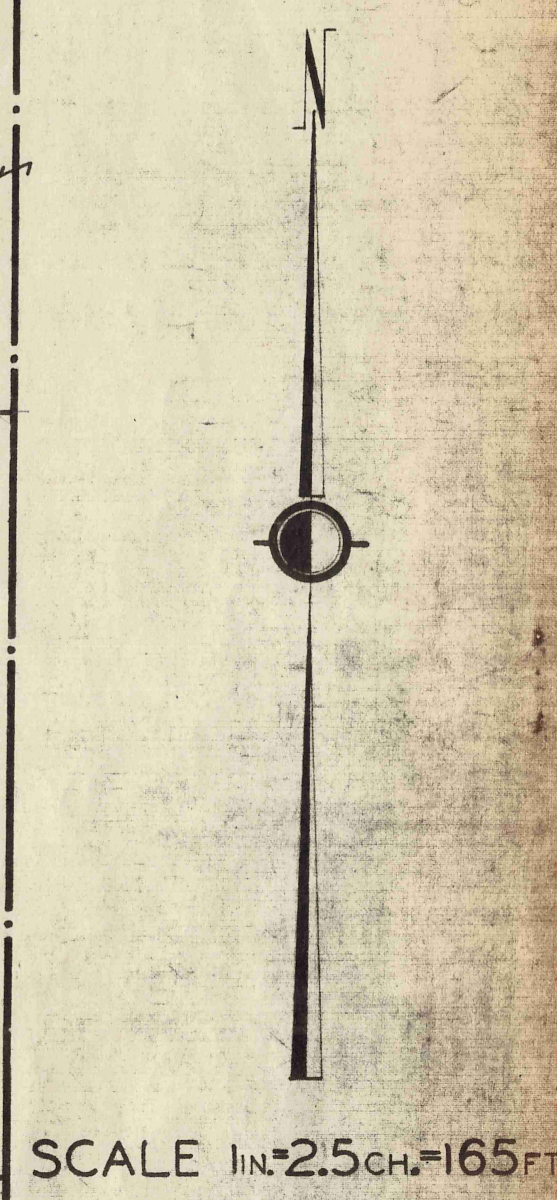
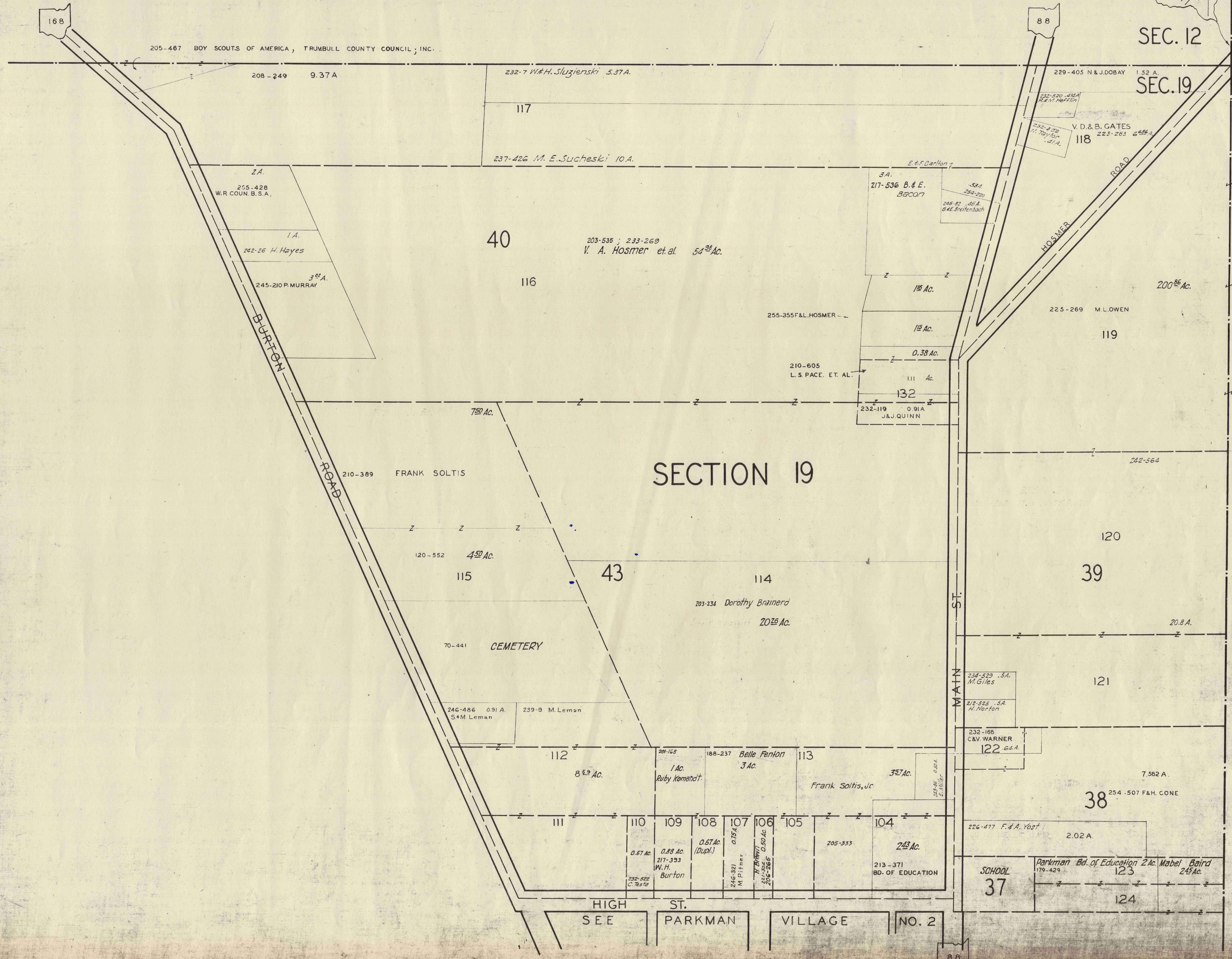
LOT 2, SECTION 5
BUNDYSBURG



JAN. 1, 1955

PARKMAN VILLAGE NO. 1

SEC. 12 SEC. 13
SEC. 19 SEC. 18



JAN. 1, 1955

